

# XpressCover

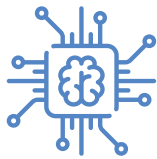
## Sell Any Insurance through Any Channel

Launch and scale any insurance product digitally without having to worry about IT development.



We enable insurance providers to **win** in an increasingly digital world. With **XpressCover™**, you can innovate new products, go to market ahead of the competition, onboard new distribution channels quickly, and even customize channel-specific products.

## Everything You Need to Distribute Insurance Digitally



**Configurable  
Product Engine**



**Auto-Generated  
Product APIs**



**Comprehensive Agency  
& Channel Management**



**Quotation Management  
& Policy Administration**



**Promo Management  
& Renewal Reminder**



**Real-Time Data  
& Reports**

With XpressCover™, you can...

## Speed Up Your Time to Market

- ✔ Set up any insurance product without programming intervention, all in a matter of hours
- ✔ Auto API generation and documentation for integration with any 3rd-party distribution channel
- ✔ Adjust product rates on-the-fly based on real-time sales data from your entire distribution network

The screenshot shows the 'XpressCover' interface for editing a 'Fire Protect' policy. It features a top navigation bar with icons for Travel Care, Fire Protect (selected), Sports PA, and Life Protect. Below this is a modal window titled 'Edit Fire Protect' with a close button. The modal is divided into sections: 'Rating Factors' with a 'Formulas' tab, 'Main Policy' showing a complex formula: 'Default Formula - ( ( Main Policy + Loading Spray Painting + Less Fire Extinguishing + Less Discounts For Good Features ) \* Deductible Table )', and 'Stamp Duty & Tax' with a 'Stamp Duty' field set to '10'. At the bottom right of the modal are 'Cancel' and 'Generate API' buttons.

## Grow Your Market Share

- ✔ Build new partnerships without having to worry about system integration
- ✔ Innovate products for specific channels without having to worry about IT setup
- ✔ Instantly enable existing channels to sell your latest products

The screenshot shows the 'Partnerships & Products' interface. It features a table with three columns representing different partner types: 'Telco Partner', 'Convenient Store', and 'E-Commerce Partner'. Each column lists seven insurance products with a corresponding toggle switch indicating availability. The products are: Travel Care, Flight Delay, Sports PA, Car Protect, Motorcycle Protect, Life Protect, and Fire Protect.

Partner Type	Travel Care	Flight Delay	Sports PA	Car Protect	Motorcycle Protect	Life Protect	Fire Protect
Telco Partner	On	On	On	Off	Off	On	On
Convenient Store	Off	Off	Off	On	On	On	On
E-Commerce Partner	On	On	On	On	On	On	Off

# *XpressCover*

**Request a demo today!**

 [info@xpresscover.io](mailto:info@xpresscover.io)

 [xpresscover.io](https://xpresscover.io)