

The logo features a stylized white 'i' with an orange dot above it, followed by the word 'InvestSure' in a white serif font.

InvestSure

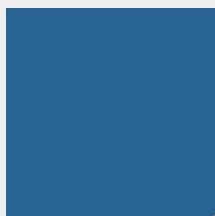
Investment Fraud Insurance

 **EasyEquities**
hannover re[®]

 **compass**[®]
The Specialist Insurer

Introduction

Background



MISSION

**To protect innocent
shareholders against losses in
the share price caused by
actual or perceived deception
committed by management.**

Needs Analysis

Examples

Volkswagen

Steinhoff

Sasol

MTN

NET1

EOH

British American Tobacco

Resilient

Valeant

Tyco

NEPI Rockcastle

Enron

Capitec Bank

Marketing Examples



Product Design and Insurance Cover

► Triggers

- News or allegations of management fraud in main stream media
- 10% drop in share price (Intra day within first 2 days)

► Claims Period

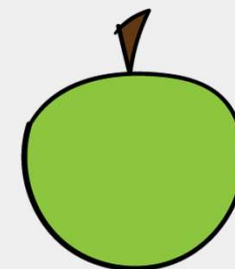
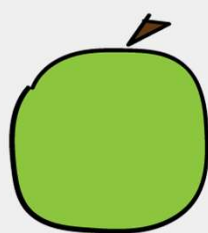
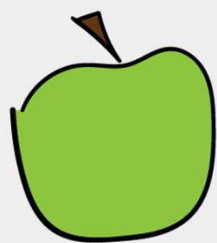
- 30 days to sell from the date of the triggers being met

► Limits

- Cover up to 70% drop in share after triggers breached

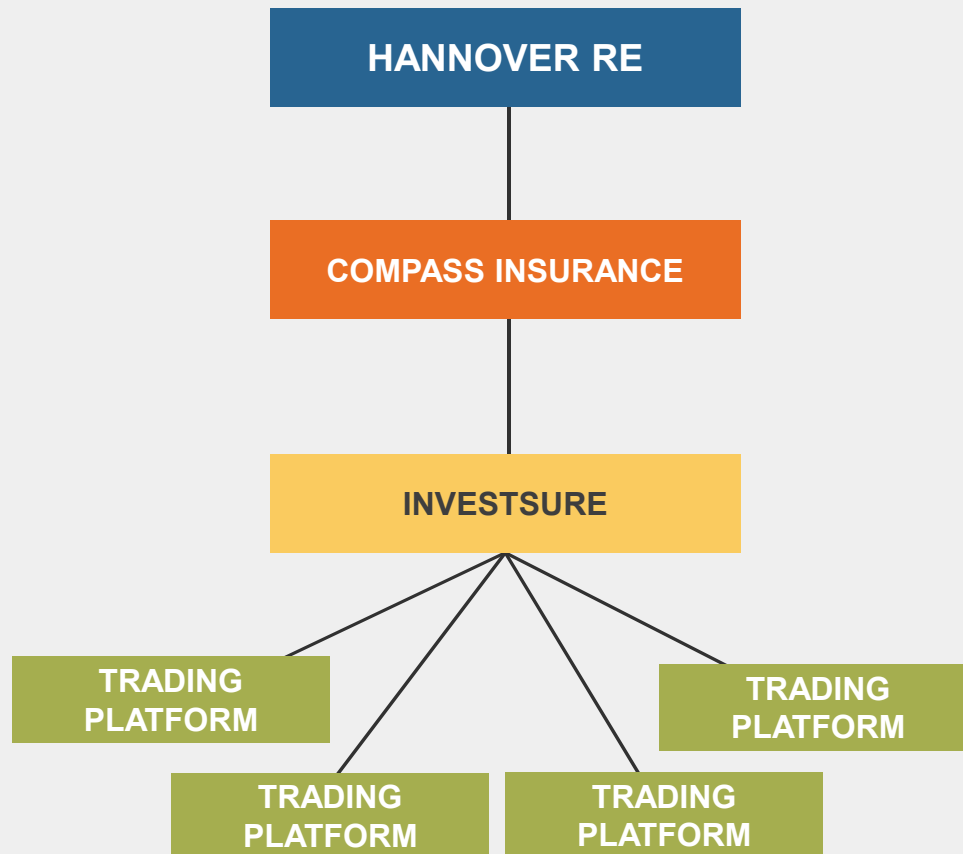
Key aspects

- World first product
- No paperwork, easy and completely digital
- Transparent
- Complete automation for clients
- Claims settled immediately
- Simple to understand



Stakeholders

Stakeholder structure



Reinsurer

hannover re[®]

Underwriter


Compass Insure

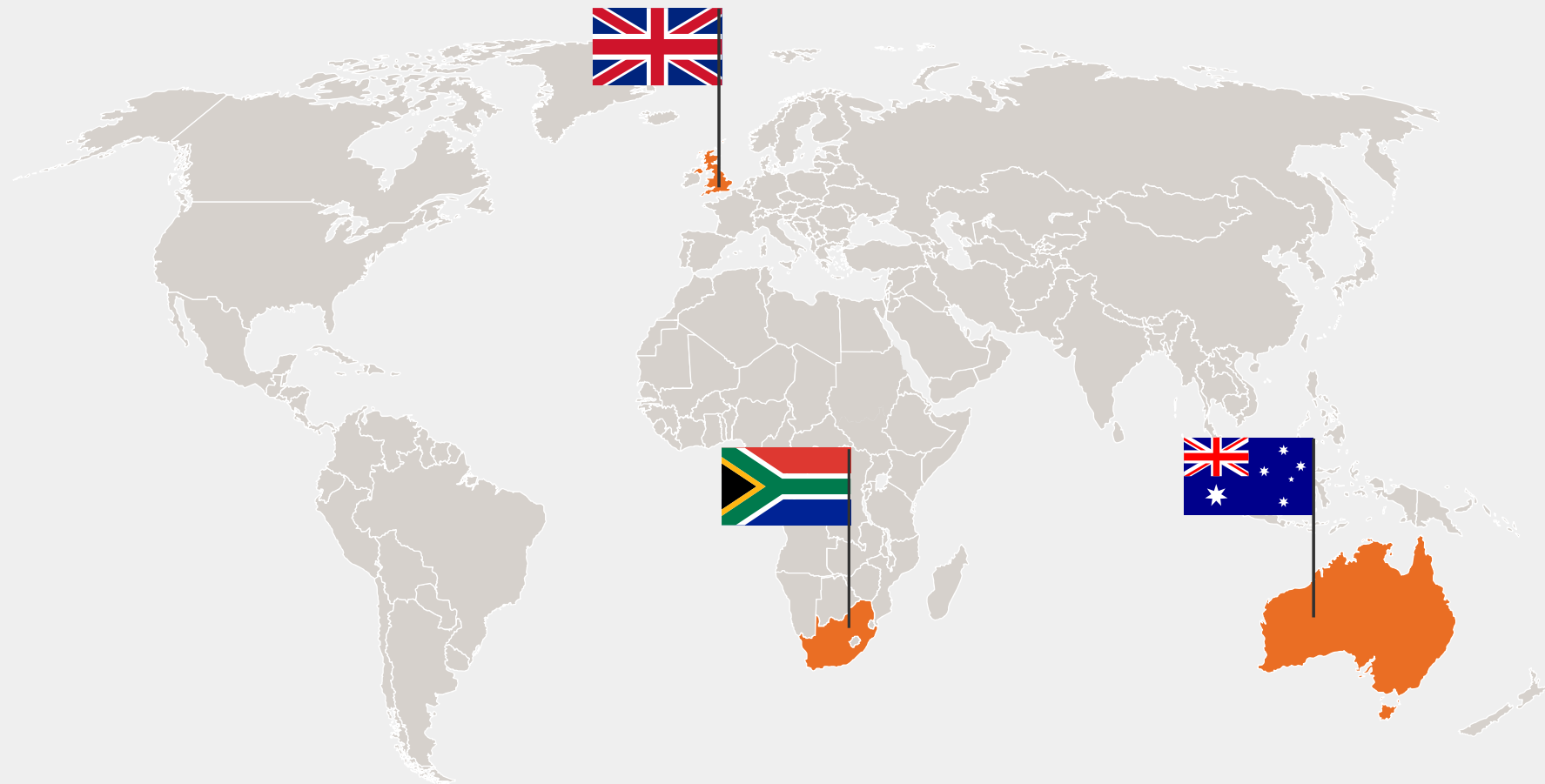
I.T. system
Product design

 InvestSure

Broker

Opportunity

- ▶ Global coverage opportunity – currently on JSE Top 120 companies, Australia pricing nearly complete



As on Easy Equities (1)

Confirm your investment

JSE


JSE Limited JSE


Amount to Buy R ↻

Trade Value	R 3.60
Investment Costs	R 0.05 >
<div><div>+</div> Add Insurance to this instrument ⓘ</div>	
AMOUNT DUE	R 3.65

As on Easy Equities (2)

Trade Value	R 3.60
Investment Costs	R 0.05 >

 Add Insurance to this instrument ⓘ

 Insurance Policy Document [View Policy](#)

Please click the VIEW POLICY button to read the POLICY before agreeing to the statements below.

☒ I have read, understood and agree to this policy.

☒ I agree that the electronic signature of this policy will be effective execution and the delivery of this mandate to the Insurer and may be used as an original mandate for all purposes.

<input checked="" type="checkbox"/> Insurance Cost inclusive of value-added tax (VAT)	R 0.02
---	--------

AMOUNT DUE	R3.67
------------	-------

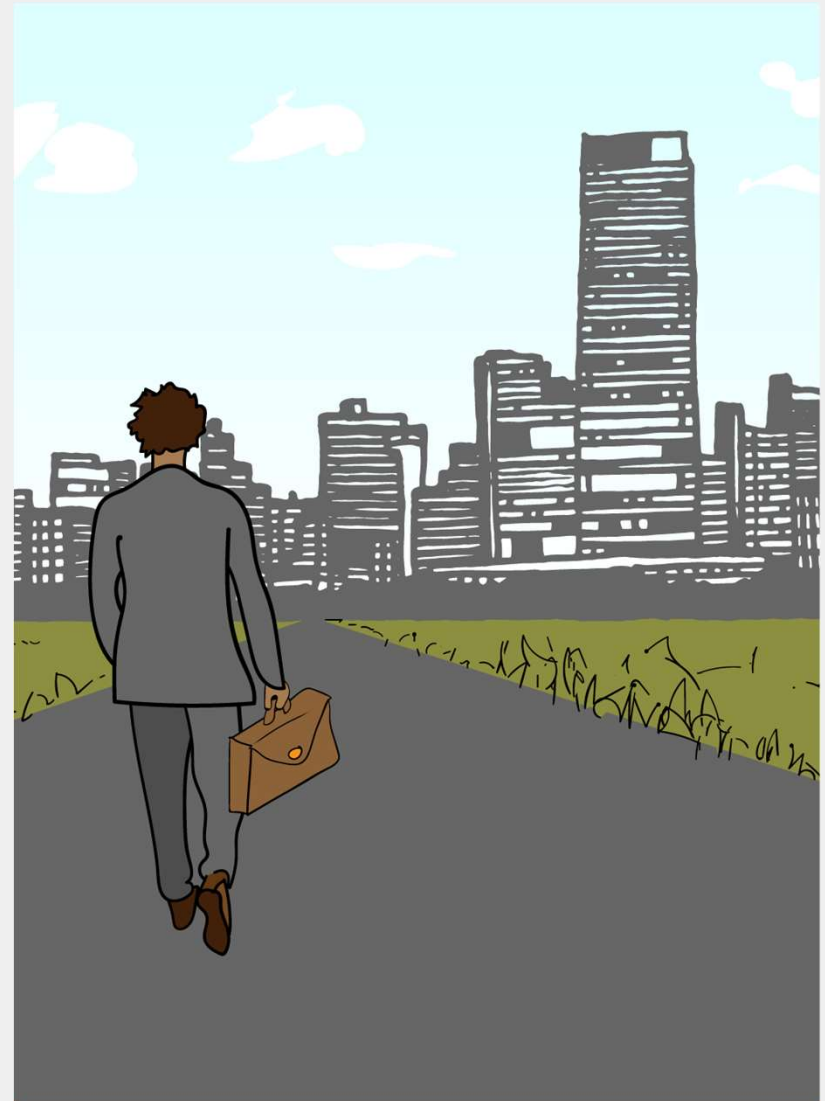
[Invest Now](#)

Current stats

...

- ▶ Sales every day since launch (18 May 2018)
- ▶ Over 4,000 sales
- ▶ Multiple claims paid
 - Average settlement time of around 30 seconds
- ▶ No downtime since launching on Easy Equities

- ▶ BEE owned
 - Shareholders include
 - 3 founders (>70%),
 - Lireas Investment Holdings (part of Hannover Re Group),
 - Compass Insurance (part of Hannover Re Group) and
 - 4Di Capital



InvestSure Founders



Mbulelo Mpofana

BCom (Banking) [32]

Mbulelo studied Business and Actuarial Sciences at the University of the Free State.

6 years experience in actuarial, finance and risk management roles at AIG. Participated in the Journey Re program hosted by Hannover Re. He has a passion for entrepreneurship.



Shane Curran

CA (SA) [27]

Shane enjoys innovative thinking and executing on those ideas.

Shane studied Accounting Sciences at TUKS, completed his articles at PwC and is a qualified CA(SA).



Ignatious Nkwinika

BSc (Computer Science) [38]

Iggy worked for Hannover Re for 7 years and other companies in various industries. He enjoys researching and exploring technologies, and is also passionate about simplicity.

Iggy studied BSc Computer Sciences at UKZN.



 InvestSure

 **compass**[®]
The Specialist Insurer

Thank you